

The Case for Investment (2011-2014)



GLOBAL PARTNERSHIP
for EDUCATION

EDUCATION IS IMPORTANT:

171 million people could be **lifted out of poverty** if all students in low-income countries left school simply with basic reading skills – equivalent to a **12%** cut in global poverty.

In 2011 an estimated **1.8 million** children's lives in sub-Saharan Africa could be saved if their mothers had a secondary education. **The figure globally is much higher.**

THE GLOBAL PARTNERSHIP FOR EDUCATION WORKS:

In 2009 over **82 million** children were enrolled in school in the Global Partnership for Education developing country partners compared to **63 million** in 2002. In other words, the Global Partnership for Education has helped put **19 million** more children into school.

In 2009 more than **68%** of **girls completed the last grade of primary school** in the Global Partnership for Education developing country partners around the world compared to **56%** in 2002. This increase in completion will help to save the lives of approximately **350,000** children under the **age of 5**.

THE DEMAND FOR FUNDING IS UNPRECEDENTED:

In the **70 the Global Partnership for Education**-eligible countries the funding needs for the coming **three years**, for which there is absorptive capacity, amounts to **US\$8 billion**. At the same time overall bilateral donor support for basic education is falling.

THE CHALLENGE IS SIMILARLY UNPRECEDENTED:

There are still over **67 million** children out of school. Almost half of these children live in **conflict-affected** and **fragile states**.

About **half of children** in the lowest-income countries **cannot read anything at all** at the end of grade 2; in rich countries this proportion is essentially **0**.

THE GLOBAL PARTNERSHIP FOR EDUCATION 2011 REPLENISHMENT:

The Global Partnership for Education is seeking **US\$2.5 billion** over three years for its pooled **Global Partnership for Education Fund**. This level of funding will achieve the following in the Global Partnership for Education **developing country partners**:

- An additional **25 million** primary school children will enrol in school.
- A **halving** of the population of out-of-school children.
- An increase in primary school completion rates by **7.5%**.
- A reduction in the number of grade 3 school children who cannot read by **50%** in 20 countries over 5 years.
- **50 million** new textbooks in classrooms.
- An increase in the number of teachers by providing in-service training to **600,000** new teachers.

Scenarios for the the Global Partnership for Education replenishment targets

all indicators refer to the Global Partnership for Education developing country partners

2.5 USD billion

2 USD billion

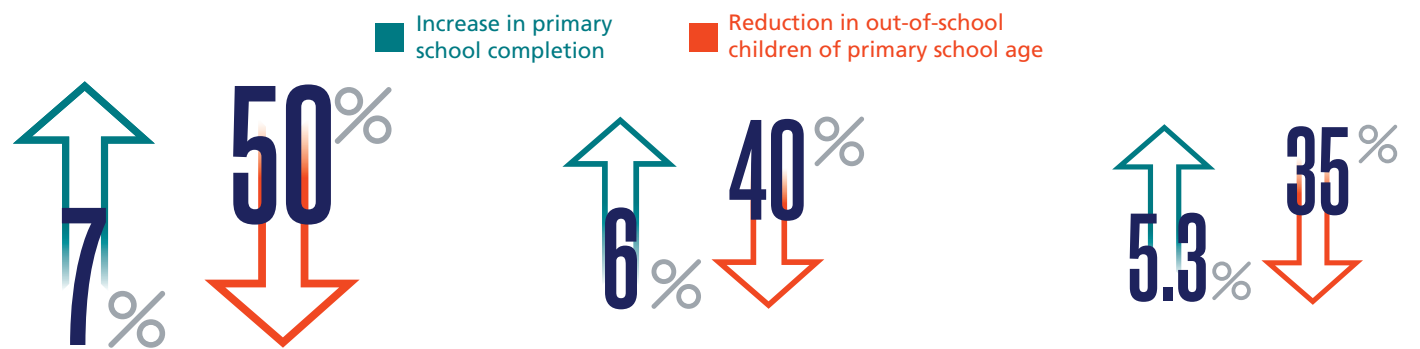
1.75 USD billion

SHORT-TERM IMPACTS OF THE GLOBAL PARTNERSHIP FOR EDUCATION FUNDING FOR EDUCATION DEVELOPMENT (3-5 YEARS)

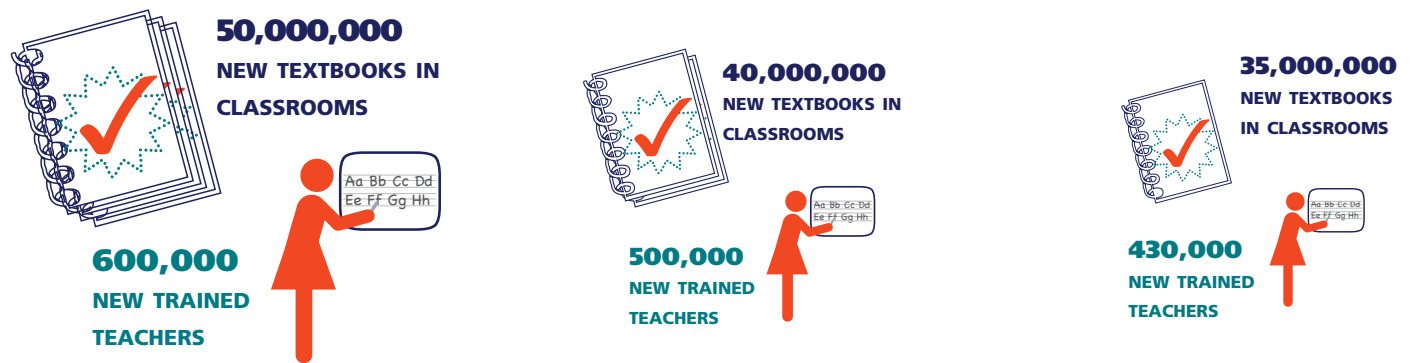
PRIMARY SCHOOL ENROLMENT



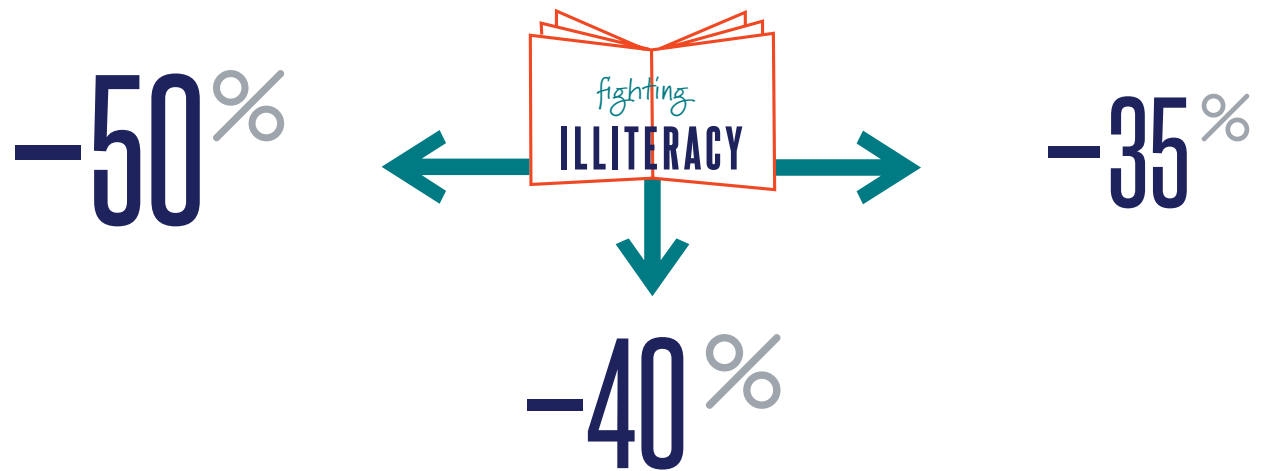
EFFORTS IN PRIMARY SCHOOL EDUCATION



SUPPORT FOR SCHOOLS

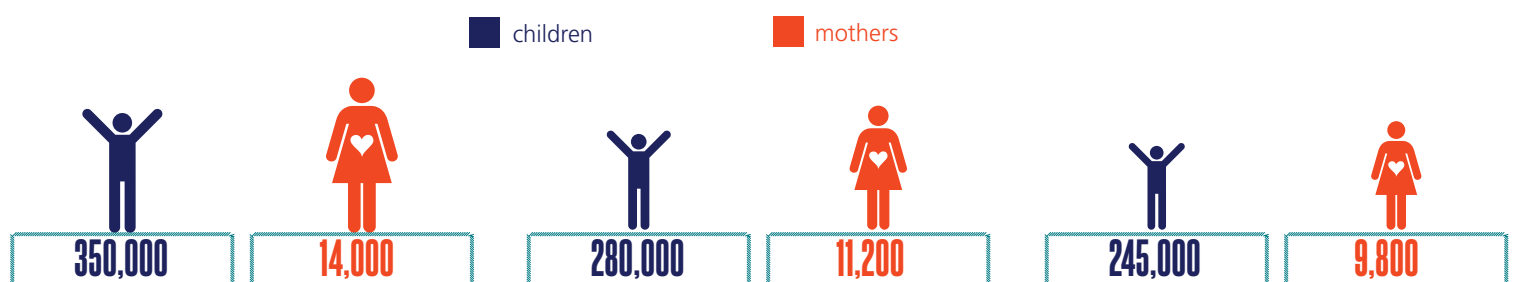


REDUCTION OF NUMBER OF GRADE 3 CHILDREN WHO CANNOT READ



LONG-TERM IMPACTS OF THE GLOBAL PARTNERSHIP FOR EDUCATION FUNDING FOR EDUCATION DEVELOPMENT (5-25 YEARS)

LIVES SAVED PER YEAR



REDUCTION IN THE NUMBER OF CHILDREN A MOTHER WILL HAVE



These results assume that, as required by the the Global Partnership for Education process, appropriate plans are prepared for the use of the funding, and the effects of the funding are also appropriately monitored. Good planning and monitoring are part of the the Global Partnership for Education package, and are increasingly rigorously monitored. These results also assume ongoing investments in health.