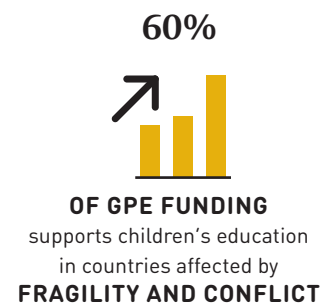
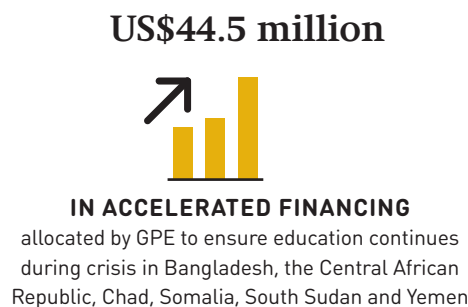
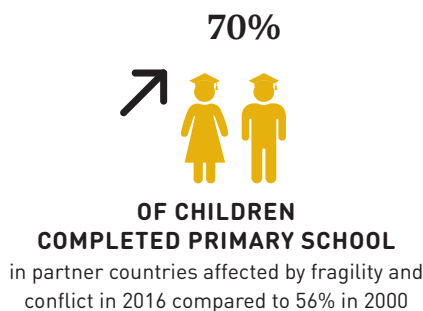


# Supporting countries affected by fragility and conflict

Almost half of GPE partner countries are affected by conflict and fragility. GPE helps them strengthen and rebuild their education systems during and after a crisis so children's education is not interrupted.

## GPE results

With GPE's support, partner countries affected by fragility and conflict have made remarkable progress under challenging circumstances:



## The challenge

- ▶ **104 million children aged 5 to 17** are deprived of education due to conflict or disaster.
- ▶ Children in countries affected by fragility and conflict are more than **twice as likely to be out of school** compared with those in countries not affected by conflict; adolescents are two-thirds more likely to be out of school.
- ▶ In 2016, education in emergencies received **2.7% of humanitarian aid**, well below the target of 4%.
- ▶ From 2013 through 2017, there were more than **12,700 attacks** on education, harming more than 21,000 students and educators.

# Education can prevent conflicts

- ▶ Each year of education **reduces the risk of conflict** by around 20%.
- ▶ People with a secondary education show **more tolerance** than those with just a primary education toward immigrants and people of a different religion or race.
- ▶ Rebuilding education systems after war can **restore hope** and rebuild trust and accountability with governments.

## GPE approach

- ▶ **Transitional education planning** maps out a coordinated approach among development and humanitarian partners as a country emerges from a crisis.
- ▶ **Flexible and accelerated funding** provides rapid support to countries in urgent need to ensure that children's schooling continues during crisis.

GPE disburses accelerated funding within eight weeks for critical interventions such as temporary shelters,

classroom construction, school meals, school supplies, teacher payments and school grants.



**GPE allocates 60%** of its funding to partner countries affected by fragility and conflict, an evidence of the priority it places on supporting the children most in need.

GPE grants are flexible and can be adjusted to allow countries to shift easily from emergency mode to long-term development.

- ▶ **Helping countries prepare for emergencies during long-term education planning.** This includes provisions for keeping children in school even during an emergency.
- ▶ **Working with partners.** GPE works with Education Cannot Wait, UNHCR and other partners to ensure that education support during crisis is complementary. GPE is also facilitating dialogue among development and humanitarian actors in many countries such as Bangladesh, Burundi, the Central African Republic, Chad, Somalia, South Sudan and Yemen to improve linkages and joint planning between humanitarian and long-term development efforts and to avoid fragmentation of education planning and financing.



The ongoing conflict in Yemen is jeopardizing the education of the country's 6.5 million school-age children. Many schools have closed as teachers, whose salaries have not been paid for months, are compelled to search for other ways of making a living.

A priority of GPE's program in Yemen is finding ways for children affected by the crisis to continue their learning. Since the start of the conflict, GPE has facilitated meetings with education partners to find solutions and help the education ministry keep schools open and functioning.

GPE is working with the government to draw up a transitional education plan and lay the foundations for a longer-term education plan. GPE's grant to Yemen of US\$72.6 million has twice been reprogrammed to enable the partnership to respond to immediate needs, such as helping the ministry and UNICEF buy basic school supplies and learning materials. The funds are also used for psychosocial support for children and teachers.



In the Central African Republic, the civil war has deprived an estimated 500,000 children of schooling. School buildings are destroyed, many of which have been attacked by armed groups and teachers have fled. Families have been displaced, and children are highly vulnerable to recruitment into armed groups, crime, sexual abuse, child marriage and early pregnancy.

GPE's accelerated funding addresses immediate needs and helps to provide a longer-term perspective by supporting the development of transitional education plans. GPE's early recovery interventions provide pre-primary and primary students with a range of measures, including classrooms in areas where displaced families are located, learning materials, meals, water, toilets and additional teachers as well as training for them. Displaced children and children from surrounding communities benefit from the support.