

>> March, 2021

THE GPE MATCH:

A 1:1 Match for Investments in Education in the World's Poorest Countries



A student in her fifth grade class at Shree Ram Narayan Ayodhya School, Pipra rural municipality, Mahottari District, Nepal. Credit: GPE / Kelley Lynch

GPE, the largest global fund dedicated to transforming education, now offers the GPE Match. Through the GPE Match, GPE will double qualifying philanthropic investments made in education in GPE partner countries by the business community or private foundations. And that doubles the impact you can have on getting more girls and boys in school and learning.

The GPE Match opens up new opportunities for your investment in education. It matches qualifying financial or in-kind contributions for you and your partners to scale up or start programs on the ground. And it matches financial contributions to GPE's new Girls' Education Accelerator.

The business community and private foundations can and do contribute greatly to taking on the world's education challenges, through investment of both money and expertise. We know that many would like to produce even deeper impact. GPE created the GPE Match to help make that happen – to fund proven ideas and to spur innovation, to scale effective programs and get new ones off the ground, to create solutions and to turn more good ideas into action.

The times call for us all to do more. While significant progress has been made over the past two decades, education quality and access still fall far short.



HUNDREDS

OF MILLIONS

of girls and boys are in school but not learning.

MORE THAN A

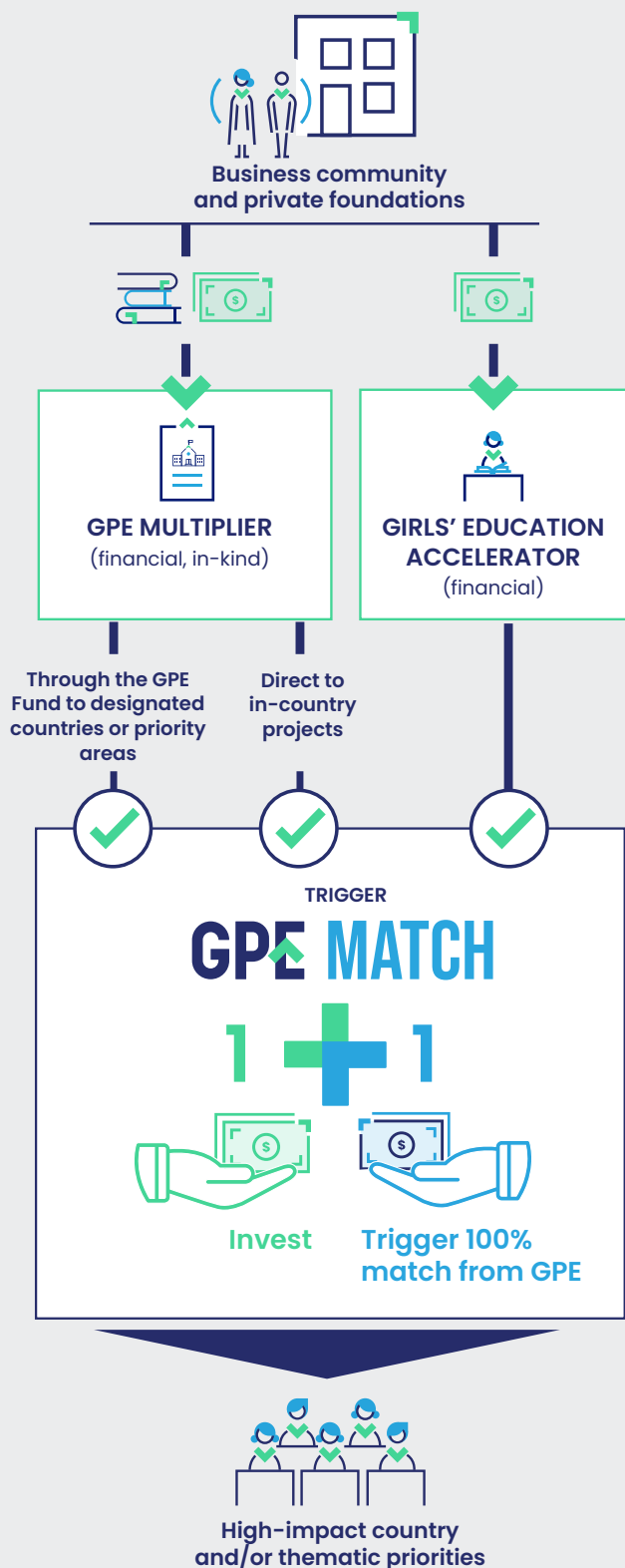
QUARTER BILLION

are still excluded from education entirely.

COVID-19

means many others who were in school before the pandemic hit may never return without the proper support.

The GPE Match can be triggered in two ways
— through the GPE Multiplier and through GPE’s
Girls’ Education Accelerator.



TRIGGERING THE GPE MATCH THROUGH THE GPE MULTIPLIER

The GPE Multiplier is an existing GPE financing instrument that provides \$1 for every \$3 in co-financing secured by a GPE partner country. But with the GPE Match, it becomes a dollar-for-dollar match if co-financing is from businesses and/or private foundations.

To access GPE Multiplier matching funds, GPE partner countries submit a light-touch expression of interest (EOI) to finance specific education programs. EOIs are submitted by countries once they have commitments for co-financing or qualifying in-kind contributions in place from donors.

The GPE Multiplier is for new initiatives or the scaling of existing ones—if those initiatives would not have been undertaken without GPE support and are aligned with countries’ national education priorities.

Businesses and private foundations can collaborate with GPE partner countries as they develop their EOIs—defining together the initiatives for which the country will seek funding. In some cases, a consortium of donors, including foundations and / or businesses might come together to pool funds and other resources.

There are two ways you can trigger the GPE Match through the GPE Multiplier:

- **Provide financing, or an in-kind contribution, directly to an in-country education program.** You can support programs directly, without channeling funding through GPE. Those funds can go to a GPE-approved grant agent for that country. For in-kind contributions, the valuation process is led by donors and country partners, subject to GPE review and approval.
- **Provide financing through the GPE Fund to a partner country you designate, or to a priority area you choose.** GPE will match the amount of money you invest, and channel this now doubled funding to high-priority initiatives in partner countries. Examples of priority areas include learning, early learning, access, inclusion, gender equality, quality teaching and data systems.



Two girls doing their homework after school in the Tilaberrri Region, Niger. Credit: GPE/Kelley Lynch

TRIGGERING THE GPE MATCH THROUGH THE GIRLS' EDUCATION ACCELERATOR

The Girls' Education Accelerator directs funding to programs that advance gender equality. While the gap between girls and boys in access to primary and secondary schooling has narrowed in recent decades, girls continue to face access challenges. More than an estimated 130 million girls are out of school globally. The COVID pandemic, which has closed schools all over the world, will likely cause an increase in this number.

The Accelerator targets 30 priority countries where girls' education lags significantly behind boys'. It will fund programs that directly address specific constraints on girls' education. These include distance to school, cultural norms and practices, school-related gender-based violence and early or forced marriage. Fundamental change is called for, and together we can make that happen.

GPE Match doubles contributions for up to a total of \$25 million, which is 10% of the target for the Girls' Education Accelerator window. This opportunity is time sensitive. Once the overall target for the window has been reached from other sources, the Match will no longer apply. Unlike for the Multiplier, only financial contributions trigger the GPE Match for the Girls' Education Accelerator.

GPE PARTNER COUNTRIES: INVESTMENTS THAT ADVANCE NATIONAL PRIORITIES

GPE Match, like all GPE funding, is for programs that advance specific, transformational priorities, defined by countries in the GPE partnership. Up to 90 countries and territories, which are home to more than 1 billion girls and boys, are eligible.

Priorities are set out in national education sector plans or other policy documents, developed with support from GPE and local education groups.

GPE funds initiatives to advance those priorities, alongside countries' domestic education budgets and money from other donors. GPE is the largest global fund solely dedicated to transforming education.

CONTACTS

Randa Adechoubou

Lead, Private Sector Engagement
radechoubou@globalpartnership.org

Stijn De Lameillieure

Team Lead, Private Sector and Foundations
sdelameillieure@globalpartnership.org